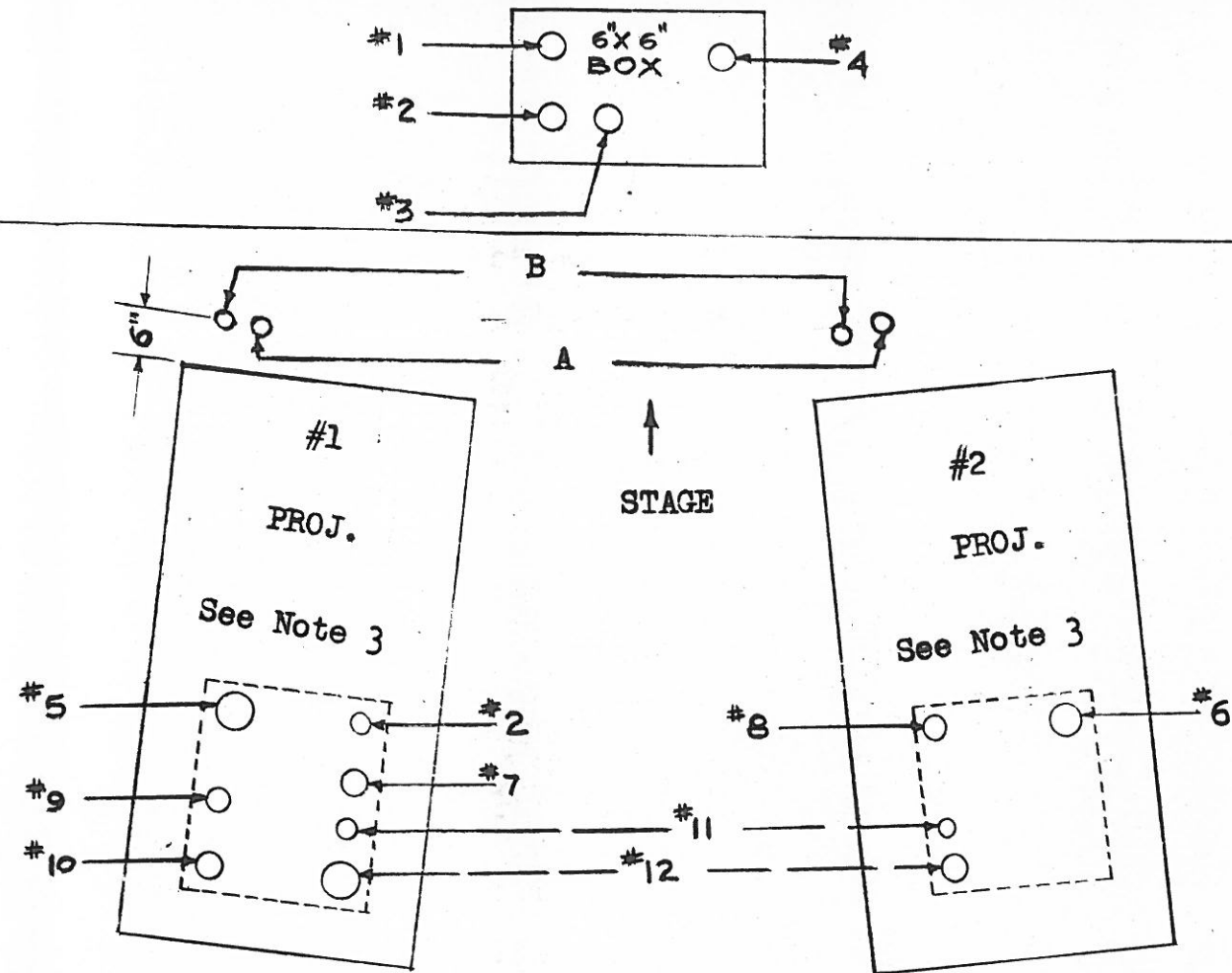


FRONT WALL (See Note 4)



PLUMBING REQUIREMENTS (See Note 1 and 2)

- A. COLD WATER FEED - SEE FIG.8 ATT. - SHUTOFF VALVE REQ'D AT EACH PROJ.
- B. DRAIN LINE TO WASTE PIPE OR EQUIVALENT - 2 OUTLETS AT EACH MACHINE CAN BE MADE COMMON AT MACHINE.

NOTES:

- 1. IF WATER RECIRCULATOR IS USED OMIT A & B.
- 2. PLACE AUTOMATIC PRESSURE REGULATING VALVE, GAUGE & MASTER SHUT-OFF VALVE IN COMMON WATER FEED LINE. LOCATE ALL IN BOOTH.
- 3. SEE TODD-AO DRAWING FOR THEATRE TO LOCATE RELATIVE TO FRONT WALL
- 4. SEE TODD-AO DRAWING FOR THEATRE FOR PORT HOLE REQUIREMENTS.
- 5. SOUND WIRING REQUIREMENTS NOT SHOWN.

ELECTRICAL REQUIREMENTS

- 1. TO POWER DISTRIBUTION PANEL - 2 #14 COND. (A.C.-110V)
- 2. C.O. CIRCUIT #1 PROJ. - 4 #14 COND. (D.C.)
- 3. TO #1 PROJ. C.O. SWITCH - 2 #14 COND. (A.C.)
- 4. TO #2 PROJ. C.O. SWITCH - 2 #14 COND. (A.C.)
- 5. TO BALLAST RESISTORS - IF GENERATOR 2-4/0--1-2/0 CONDS. OR TO RECTIFIERS 2-4/0 (D.C.-180A-65V)
- 6. SAME AS #5
- 7. TO FRONT WALL - FOR AUXILLIARY MOTOR SWITCH (IF USED) - 4 #14 COND.
- 8. SAME AS #7
- 9. TO MAGNETIC STARTER, IF GENERATOR, OR RECTIFIER RELAYS 4 #14 COND. (2-A.C.-110V)
- 10. TO POWER DISTRIBUTION PANEL - 3 #10 COND. (2-A.C.-110V)
- 11. CROSSOVER CONDUIT - 2 #14 COND. (D.C.)
- 12 CROSSOVER CONDUIT - 2 #10 - 2 #14 COND. (A.C.)

DATE: 3-23-56
 DRWN: C.E.W.
 APV'D: P
 SCALE: NONE

THE TODD-AO CORPORATION
 ROCKERFELLER CENTER
 NEW YORK CITY, NEW YORK

MB-100B

PRE-INSTALLATION REQUIREMENTS
 2-PROJECTOR INSTALLATION