

MOTION PICTURE RESEARCH COUNCIL, Inc.

1421 NORTH WESTERN AVENUE, HOLLYWOOD 27, CALIFORNIA

HOLLYWOOD 3-3201

INSTRUCTION SHEET

OPTICAL DIRECTIONAL SOUND TEST FILM

ODS-1

(for adjusting PERSPECT-A-SOUND equipment)

The film contains two sound tracks, one on each edge of the film printed head to tail. One track is used to align and adjust the integrator, and the other is to check and adjust the electrical characteristics of the individual channels. The frequencies and footage are as follows:

INTEGRATOR ALIGNMENT		FREQUENCY FILM	
Frequency	Footage	Frequency	Footage
Leader.....	17	Leader.....	17
1000.....	45	30 + 1000.....	35
None.....	10	30.....	3
30.....	15	30 + 70.....	15
None.....	3	30.....	3
35.....	15	30 + 5000.....	15
None.....	3	30.....	3
40.....	15	30 + 8000.....	15
30 + 800.....	42	30.....	14
30.....	5	35 + 1000.....	35
35 + 1000.....	42	35.....	3
35.....	5	35 + 70.....	15
40 + 1200.....	42	35.....	3
None.....	5	35 + 5000.....	15
1000.....	43	35.....	3
Leader.....	17	35 + 8000.....	15
		35.....	14
		40 + 1000.....	35
		40.....	3
		40 + 70.....	15
		40.....	3
		40 + 5000.....	15
		40.....	3
		40 + 8000.....	15
		Leader.....	17
		TOTAL.....	329

(See Over)

Member Companies: Columbia Pictures Corp. • Loew's Incorporated • Paramount Pictures Corporation • RKO-Radio Pictures, Inc. • Republic Productions, Inc. • 20th Century-Fox Film Corporation • Universal Pictures Company, Inc. • Warner Bros. Pictures, Inc.

The leader on the head end of the INTEGRATOR ALIGNMENT test is marked "Start Integrator Adjustment." (This is the tail end of the FREQUENCY film.)

The leader on the head end of the FREQUENCY film is marked "Start Multi-Freq. Integrator." (This is the tail end of the INTEGRATOR ALIGNMENT.)

Levels should be adjusted as follows:

1. Integrator Alignment

- (a) The output of the integrator preamplifier should be adjusted to -3 dbm, by means of the 1000-cycle tone. (the output of this 1000-cycle tone is 6 db below 100% variable area.)
- (b) The carrier meters on the integrator should be adjusted to "50" by means of the 30-, 35- and 40-cycle tones.
- (c) The output of the individual channels should be balanced by means of the 30 + 800, 35 + 1000, and 40 + 1200 cycle tones, using individual volume controls on each channel.

2. Frequency Film

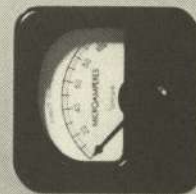
- (a) By means of the frequency film, the electrical response of the individual channels should be adjusted, in the range above 100 cycles, to the Standard Electrical Characteristic for Theater Sound Systems (Motion Picture Research Council Bulletin of April 20, 1948).

Additional copies of this test film are available from the Motion Picture Research Council.

This test film at this output of the 1000-cycle tone (6 db below 100% V. A. modulation) and the relative level of the control signals (26 db below 100% V. A. modulation) have been adopted by the Research Council as a motion picture industry practice.

PERSPECTASOUND INTEGRATOR UNIT
MFG. BY
FAIRCHILD RECORDING EQUIP. CO.

ON
OFF



PERSPECTASOUND INTEGRATOR UNIT
MFG. BY
FAIRCHILD RECORDING EQUIP. CO.

PERSPECTASOUND
OFF
AUTO

PERSPECTASOUND
ON



