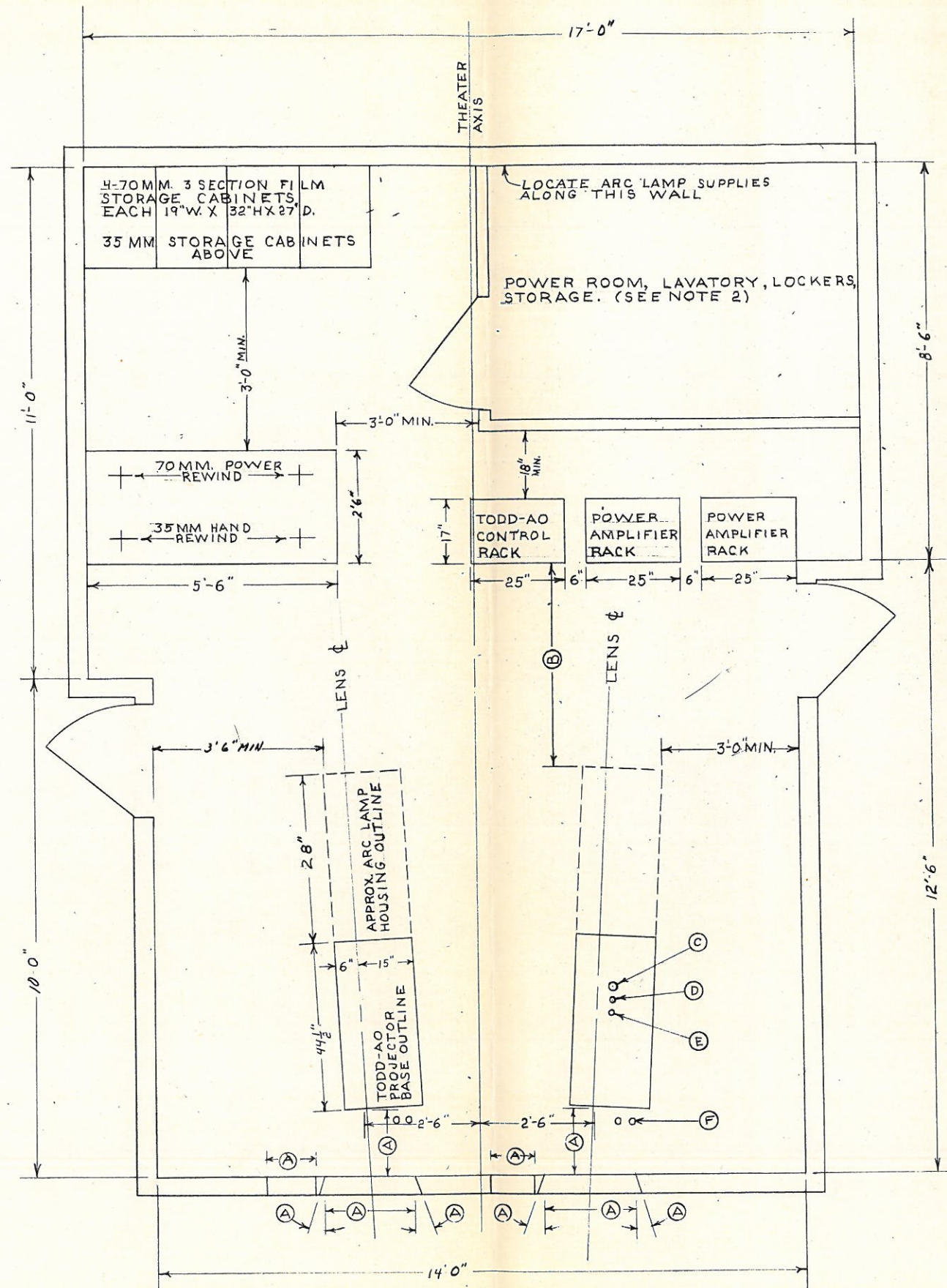


REVISED	BY	CHANGES
155-5-4258	①	Notes revised - O.A. dim. changed



LEGEND: (See Note 1)

- (A) These dimensions vary for each installation. Refer to TODD-AO drawing for the individual theatre layout.
- (B) This spacing should be 4'6" minimum. If other than TODD-AO Special Theatre Sound Unit is used, layout must be modified to suit.
- (C) Conduit for D.C. supply from rectifiers or generator (ballast resistor) to each projector.
- (D) Conduit to A.C. Relays at rectifiers, or A.C. magnetic starter at generator, with crossover conduit between projectors.
- (E) Conduit from A.C. distribution panel for 115V power supply to projectors, 3 #10 Conductors, with crossover conduit between projectors.
- (F) Changeover and auxiliary motor switch requirements shown on Dwg. MB-100 B.
- (G) Consult sound service company for sound wiring requirements for each particular system.
- (H) Cooling water requirements: 1 feedline with shutoff valve and one drainline required at each base, with common feed line equipped with automatic pressure regulating valve, gauge, and master shutoff valve located in booth.

NOTES:

- (1) For greater detail see Dwg. MB-100 B titled, "Pre-Installation Requirements - 2 Projector Installation" and Figure 8, "Installation Diagram - Elevation & Plan Views showing location of Plumbing and A.C. and D.C. Power supplies."
- (2) This space arrangement may be dictated by local ordinances and area requirements of various equipment.
- (3) For projection ports use ophthalmic type glass available from Optical Sales Division, Pittsburgh Plate Glass Co., Pittsburgh, Pa. or Maltese Parallel Lenses (Water White). Available: National Theatre Supply Company -- must be removable.
- (4) Do not reduce inside booth dimensions without consulting the TODD-AO Corporation.

TYPICAL BOOTH LAYOUT FOR 2 MACHINE
TODD-AO SYSTEM

DO NOT SCALE

MATERIAL		FINISH	
SCALE NONE	USED ON		
DRAWN 12-14-55 BY E.S.C.	NO. REQ'D		
CHECKED BY			
APPROVED BY			

MB-100-A